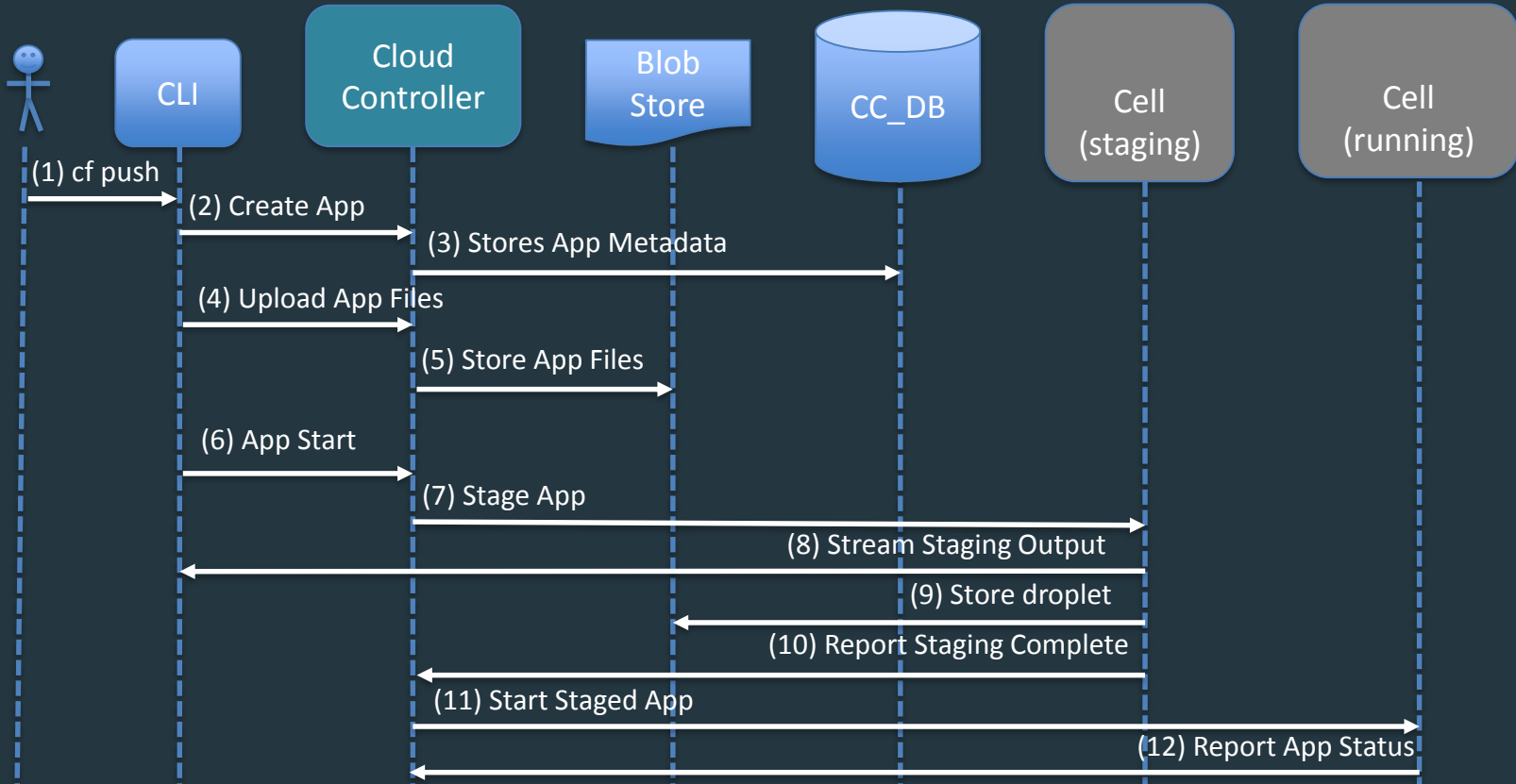


Buildpack

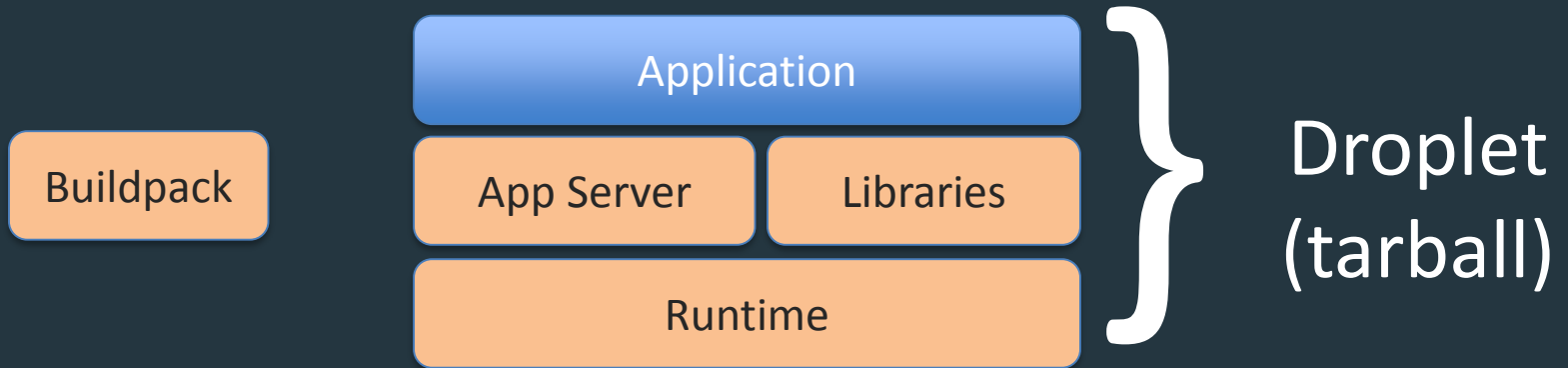
Agenda

1. Review Staging
2. Buildpack API

Review Pushing An App



Droplet



Agenda

1. Review Staging
2. Buildpack API

Buildpack API

`bin/detect`

Determines whether the buildpack can stage the application

`bin/compile`

Builds the droplet

`bin/release`

Provides information on how to run the application

bin/detect

Detection criteria:

| | |
|--------|---------------------|
| Ruby | Gemfile exists |
| Node | package.json exists |
| Python | setup.py exists |

bin/detect

```
$ cf push
```

Cell iterates over all admin and system
buildpacks calling:

```
bin/detect scripts
```

until one returns exit code 0

```
$ cf push -b <url|name>
```

```
bin/detect
```

is not called.

bin/compile

Provide any of the following if needed:

| | |
|-------------------|---|
| Runtime | Java VM, Ruby Interpreter, JavaScript Interpreter |
| App Server | Tomcat, Nginx, WEBrick |
| Support Libraries | Ruby gems, NPM packages, APM agents |

bin/release

Output a YAML document in the following form:

```
config_vars:  
  name: value  
default_process_types:  
  web: <start command>
```

Only the `web: value` is used to get the start command for the app

A dark, atmospheric photograph of the Golden Gate Bridge in San Francisco, partially obscured by a thick layer of fog. The bridge's iconic towers and suspension cables are visible against a grey, overcast sky. The foreground shows a dark, rocky hillside with sparse vegetation.

Pivotal[®]

Transforming How The World Builds Software